

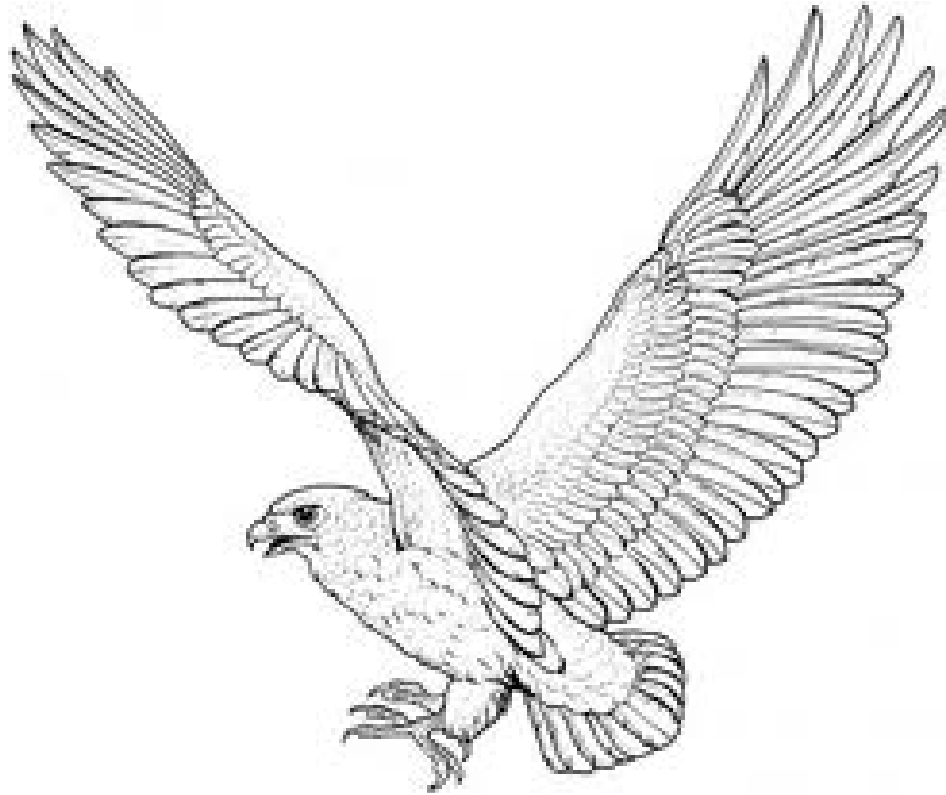


COMUNE DE ARDAULE
Ufitziu Limba Sarda

S'alfabetu de sos animales

A

a



ASTORE

astore

astore

A

a

Ufitziu Limba Sarda de Ardaule – Annu 2013 - ©gianfranca piras



COMUNE DE ARDAULE
Ufitziu Limba Sarda

B

b



BENTÙRGIU ('enturzu)

bentùrgiu

bentùrgiu

Ufitziu Limba Sarda de Ardaule - Annu 2013 - @gianfranca piras

B

b



COMUNE DE ARDAULE
Ufitziu Limba Sarda

C

c



CADDU

caddu

caddu

C

c

Uffiziu Limba Sarda de Ardaule - Annu 2013 - ©gianfranca piras



COMUNE DE ARDAULE
Uffiziu Limba Sarda

D

d



DINDU

dindu

dindu

Ufizziu Limba Sarda de Ardaule - Annu 2013 - ©gianfranca piras

D

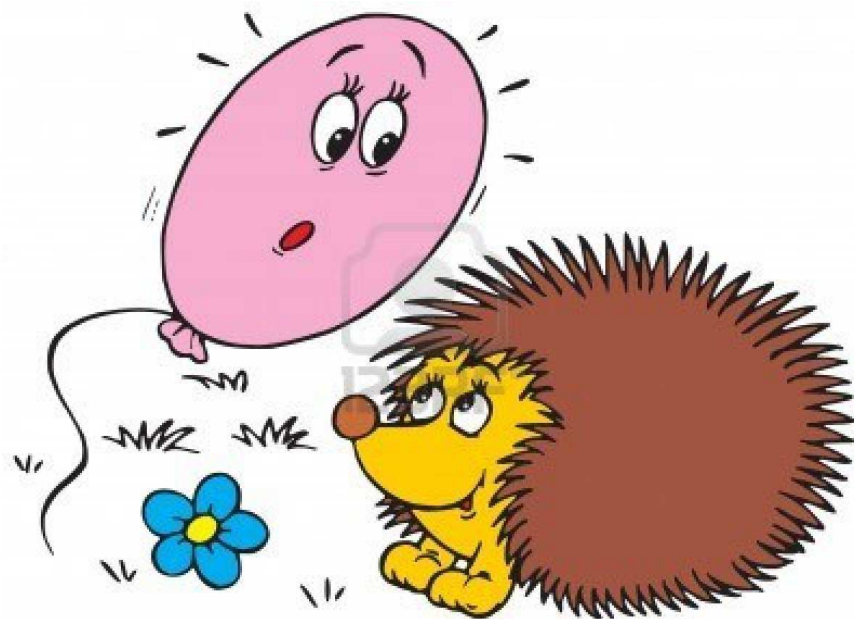
d



COMUNE DE ARDAULE
Ufizziu Limba Sarda

E

e



ERIGHISSU

erighissu

erighissu

E

e

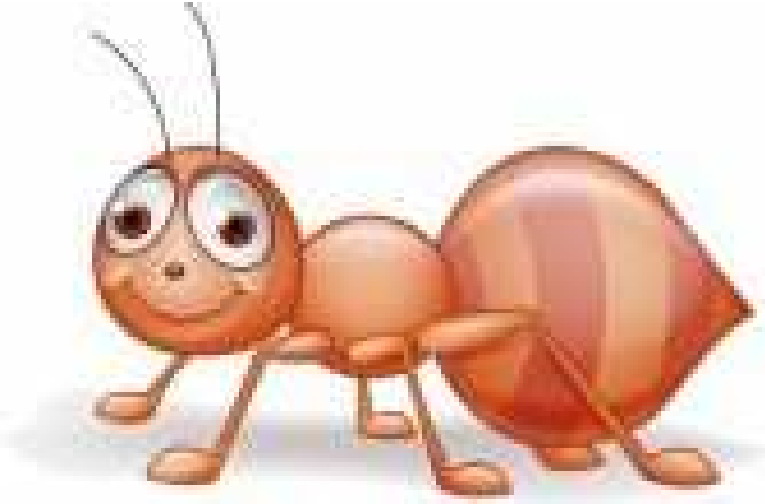
Ufitziu Limba Sarda de Ardaule - Annu 2013 - ©gianfranca piras



COMUNE DE ARDAULE
Ufitziu Limba Sarda

F

f



FORMIGA (*'frumiga*)

formiga

formiga

Ufitziu Limba Sarda de Ardaule - Annu 2013 - ©gianfranca piras

F

f



COMUNE DE ARDAULE
Ufitziu Limba Sarda

G



GATU ('atu)

gatu

gatu

g

G

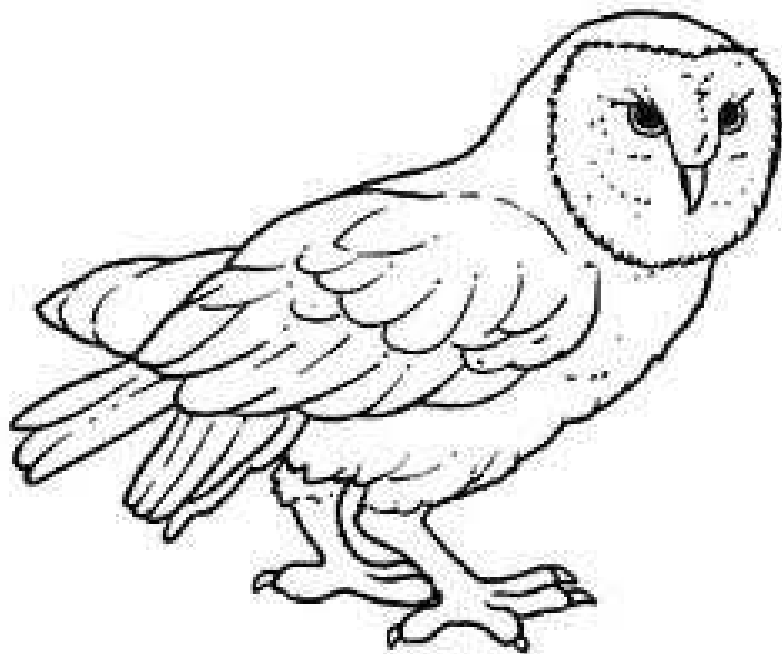
g



COMUNE DE ARDAULE
Ufitziu Limba Sarda

I

i



ISTRIA

istria

istria

i

i

Ufizziu Limba Sarda de Ardaule – Annu 2013 - ©gianfranca piras



L

I



LÈPERE

lèpere

lèpere

L

L

Ufizziu Limba Sarda de Ardaule – Annu 2013 - ©gianfranca piras



COMUNE DE ARDAULE
Ufizziu Limba Sarda

M

m



MARGIANE (*marzani*)

margiane

margiane

M

m



N

n



NIU

niu

niu

Uffiziu Limba Sarda de Ardaule - Annu 2013 - ©gianfranca piras

N

n



COMUNE DE ARDAULE
Uffiziu Limba Sarda

O

O



OU

ou

ou

O

o

Ufitziu Limba Sarda de Ardaule – Annu 2013 - ©gianfranca piras



P

p



PUDDA

pudda

pudda

P

p



R

r



RANA (*arrana*)

rana

rana

Ufitziu Limba Sarda de Ardaule – Annu 2013 - @gianfanca piras

R

r



COMUNE DE ARDAULE
Ufitziu Limba Sarda

S

S



SÒRIGHE

sòrighe

sòrighe

Uffiziu Limba Sarda de Ardaule - Annu 2013 - @gianfranca piras

S

S



COMUNE DE ARDAULE
Uffiziu Limba Sarda

T

t



TESTÙINE (*tostòinu*)

testùine

testùine

T

t



U

u



USIGNOLU (*rusignolu*)

usignolu

usignolu

U

u



V

V



VERME ('erme)

verme

verme

V

V

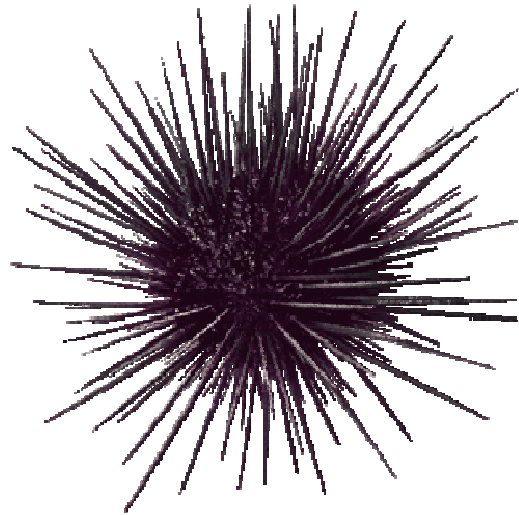
Ufizziu Limba Sarda de Ardaule - Annu 2013 - @gianfranca pitras



COMUNE DE ARDAULE
Ufizziu Limba Sarda

Z

Z



ZINZINU

zinzinu

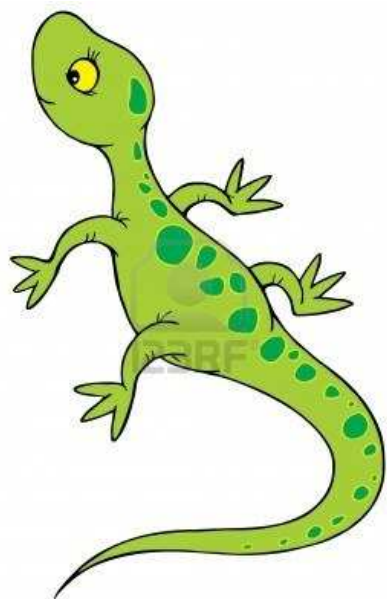
zinzinu

Z

Z



TZ



tz

TZILIGHERTA

tziligherta

tziligherta

TZ

tz

